

FORMENTRY SERVER 2.0.0

The User's Manual

Last Updated: December 20, 2010



TM

Widget Press, Inc.

Copyright © 2011 Widget Press, Inc. All rights reserved. Widget Press and the Widget Press logo are trademarks of Widget Press, Inc. FormEntry is a trademark of Widget Press, Inc.

Acknowledgements

Portions of this Widget Press Software may utilize the following copyrighted material, the use of which is hereby acknowledged:

Mac Copyright © 2011 Apple, Inc.

iPhone Copyright © 2011 Apple, Inc.

iPhone touch Copyright © 2011 Apple, Inc.

iPad Copyright © 2011 Apple, Inc.

CONTENTS

<i>Welcome to FormEntry Server</i>	4
<i>FormEntry Server Features at a Glance</i>	4
<i>Resources for Learning More</i>	8

WELCOME TO FORMENTRY SERVER

With FormEntry Server you can sync documents from FormEntry for Mac to the iPad, iPhone and iPod touch. This section will provide an overview of FormEntry Server features and lists resources for learning more.

FormEntry Server is a Mac OS X/OSX Server application for syncing multiple FormEntry for Mac users' documents with multiple users of iPads, iPhones and iPod touches. FormEntry Server delivers powerful distribution with an easy to use setup.

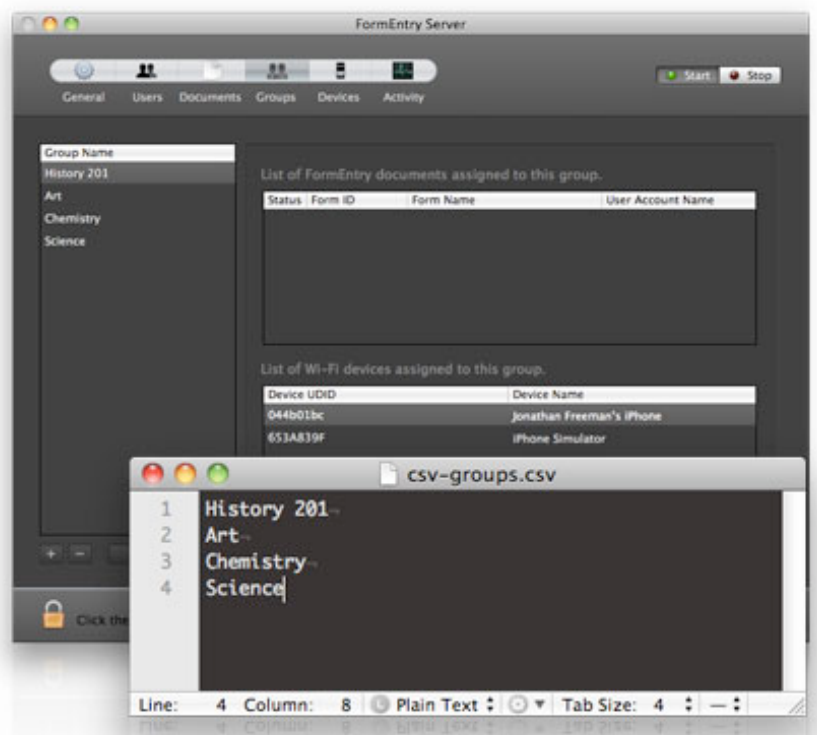
FormEntry Server Features at a Glance

The next few pages provide a high level overview of the key FormEntry Server features. The remainder of the manual provides the details in creating accounts, groups and devices. When discussing forms, we tend to refer to the following as having the same meaning: FormEntry for iPhone document, document, form doc, doc, form and form application.

IMPORTING

Do you have hundreds or even thousands of different groups (departments, classes, teams)? Do you have hundreds or maybe thousands of iPads, iPhones or iPod touches? FormEntry Server offers an easy way of importing those groups at once through CSV (Comma Separated Value) files.

Importing large sets of data save time and repetitive process of manually adding each item. From either the group or device section, you can import CSV files. For device CSV imports, you can also assign multiple groups for each device. Refer to the manual for further instructions on the proper CSV formats.



REMOTE ADMINISTRATION

By default, every FormEntry for Mac authors can publish any form document to their assigned groups. They can have the ability to update those documents.

If granted administrative rights, FormEntry for Mac authors are allowed to update and delete their FormEntry documents remotely from the server. They can even suspend (pause) the publishing of their documents from being synced with FormEntry for iPhone users.

You can also set your FormEntry document to expire once a user leaves the original paired Wi-Fi network. See Location Expiration for details.

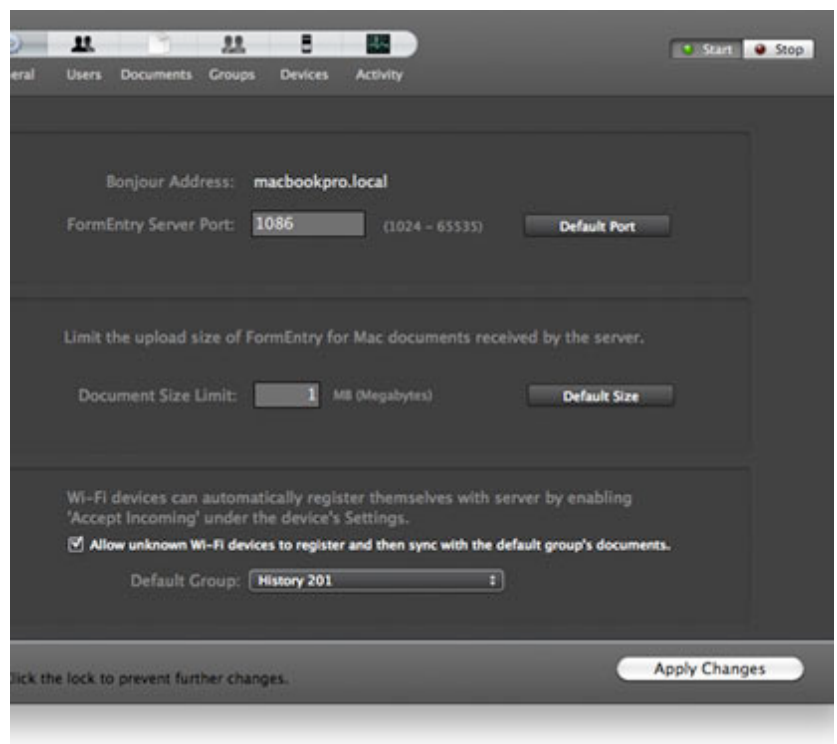
EASY SETUP

FormEntry Server offers a straightforward approach in configuration. You simply add some user accounts, groups and devices and then assign groups to the accounts and devices.

Next, simply start the server and enter your local administrator credentials. That's it, FormEntry Server should be running to accept incoming and distribute documents to FormEntry for iPhone users.

FormEntry Server by default, runs on Port 1086. If there are conflicts, this port number can easily be changed to any available port number.

FormEntry for Mac authors can publish their forms to the Internet address of FormEntry Server with the port number provided.



AUTOMATIC WI-FI SYNCING

Transferring your FormEntry document to the iPhone or iPod touch is easy. In fact, no wires are needed. You simply enable 'Accept Incoming' from FormEntry for iPhone under the Settings screen. FormEntry Server will detect all Wi-Fi devices and sync FormEntry documents over to any available iPad, iPhone or iPod touch.

Both FormEntry for iPhone and FormEntry Server have to be on the same Wi-Fi network.

INTERNET DE- PLOYMENT

Using FormEntry Server to host your FormEntry documents, you can easily deploy your forms across the Internet to remote iOS users.

After you have designed and tested your FormEntry document, post your document to FormEntry Server, ready for distribution over a local Wi-Fi network or across the Internet. iOS device users will have to enter FormEntry Server's URL address from within FormEntry Touch.

AUTHORIZED USERS

FormEntry Server allows you to configure each user account with full name, account name and password for your FormEntry for Mac users. After the account is created, you can assign their groups.

FormEntry for Mac users publish only to the groups they are assigned. Once published, FormEntry for iPhone users can retrieve the form documents from their assigned groups.



Only authorized FormEntry for Mac users are allowed to publish their form documents to FormEntry Server. Once you have created a user account on FormEntry Server, any FormEntry for Mac users can log in with their credentials and publish their form to any of their assigned groups on the server.

AUTOMATIC REGISTRATION

By default, FormEntry only allows syncing with iPads, iPhones and iPod touch devices that's been added from the Devices section. However, you can instantly add unknown devices to be registered with FormEntry Server by enabling automatic registration from the General section.

Once automatic registration is enabled, unknown devices that have enabled 'Accept Incoming' from FormEntry for iPhone will be synced with the default group's documents.

PUBLISH FROM ANYWHERE

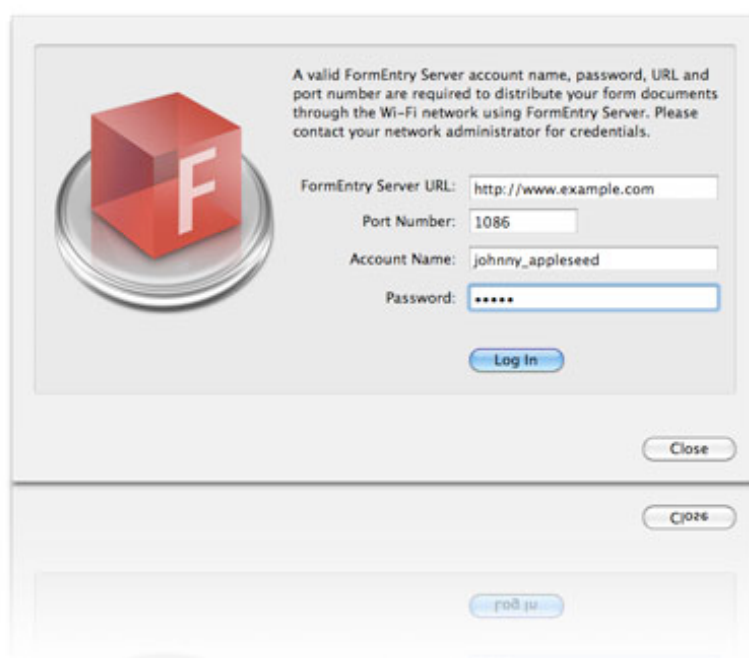
After the server has been started, authorized FormEntry for Mac users can publish from anywhere over the internet.

The only publishing requirements a FormEntry for Mac user needs are:

1. Bonjour/Domain name or IP Address of FormEntry Server
2. The port number assigned to FormEntry Server.

Of course, an Internet connection and FormEntry for Mac would be helpful too.

If FormEntry for Mac users are within the server's local area network, it is sometimes easier to publish to the server's Bonjour address.



ACCOUNTS AND GROUPS

FormEntry Server handles the distribution of FormEntry for Mac documents to all iPad, iPhone and iPod touch devices that are registered with the server. Groups make up the link between FormEntry for Mac authors and FormEntry for iPhone users.

FormEntry for Mac users will have an account on FormEntry Server and can belong to any number of groups. Devices, such as the iPad, iPhone and iPod touch are registered with the server and can belong to any number of groups.

Once a FormEntry for Mac author publishing their form to a group, any FormEntry for iPhone user can receive that form once 'Accept Incoming' is enabled.

UNLIMITED LICENSE

With FormEntry Server, you don't have to pay extra for client access licenses. Every FormEntry Server comes with an unlimited client license.

Everything you need to server hundreds or thousands of iPads, iPhones or iPod touches comes with FormEntry Server.

Resources for Learning More

To get the most out of FormEntry, please consult the following resources:

FORMENTRY SERVER USER'S MANUAL

This full-color PDF document provides detailed information about FormEntry Server features and instructions for working with your project.

WEB RESOURCES

Go to www.widgetpress.com/support to get the latest information about updates, articles, forums and how to guides. You can also purchase a FormEntry Server license key on the web.

